

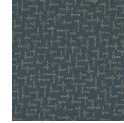
# HBF



## Enriched Boucle

1021-89 Grey Salt

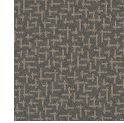
\$69.00/yard



1021-55 -  
Poppy Seed



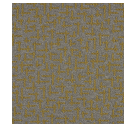
1021-89 - Grey  
Salt



1021-31 -  
Hazelnut



1021-11 -  
Macadamia



1021-63 -  
Turmeric






|                    |                              |
|--------------------|------------------------------|
| <b>DESIGNER</b>    | Christiane Müller            |
| <b>APPLICATION</b> | Upholstery                   |
| <b>CONTENT</b>     | 63% polyester, 37% acrylic   |
| <b>WIDTH</b>       | 56" W                        |
| <b>REPEAT</b>      | 7.125" V x 7.125" H          |
| <b>WEIGHT</b>      | 26.13 Ounces Per Linear Yard |
| <b>FINISH</b>      | Finish                       |
| <b>BACKING</b>     | None                         |
| <b>ABRASION</b>    | 100,000 double rubs (W)      |
| <b>ORIGIN</b>      | Germany                      |
| <b>MAINTENANCE</b> |                              |

WS: Clean with upholstery shampoo or mild dry cleaning solvent.

Bleach solutions up to 10% for cleaning difficult stains.



---

|                                     |   |
|-------------------------------------|---|
| <b>SUSTAINABILITY</b>               | Third Party Certified, Indoor Advantage™ Gold.<br><br>Meets BIFMA e3 credit 7.4.4 for Targeted Chemical Elimination which includes PFAS restrictions.<br><br>Based on disclosure from the supplier this product does not contain harmful chemicals listed on the Red List.<br><br>Free of intentionally added PFAS chemicals.   |
| <b>NOTES</b>                        | Bleach cleanable.   |
| <b>PRICE   GRADE</b>                | \$69.00   HBF Grade J   |
| <b>ACT REGISTERED CERTIFICATION</b> |      |
| <b>PRICE LIST</b>                   | <a href="#">Go to price list</a>  |
| <b>DOWNLOAD</b>                     | <a href="#">Fabric Product Documents</a><br><a href="#">Maintenance</a><br><a href="#">Sustainability Statement</a><br><a href="#">Sustainability Certification Summary</a><br><a href="#">Indoor Advantage™ Certificate</a><br><a href="#">Sustainable Contents</a><br><a href="#">Performance Textiles</a><br><a href="#">Cleaning &amp; Disinfection Against COVID-19</a>  |
| <b>OTHER</b>                        | <a href="#">Other</a><br><a href="#">PFAS - FAQ</a>   |

---