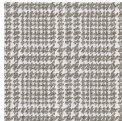


Perrito

1100-75 Red Kelpie

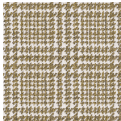
\$45.00/yard



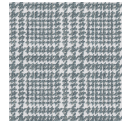
1100-18 - Akita



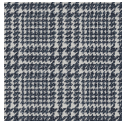
1100-23 - Golden Retriever



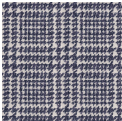
1100-63 - Pomeranian



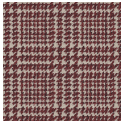
1100-56 - Kerry Blue



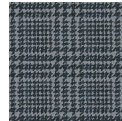
1100-67 - Cane Corso



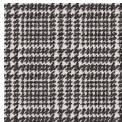
1100-77 - Show Poodle



1100-75 - Red Kelpie



1100-59 - Blue Heeler








1100-89 - Dalmatian

APPLICATION	Upholstery
CONTENT	95% polypropylene, 5% polyester
WIDTH	54"
REPEAT	4 5/8" V x 4 5/8" H (Fabric shown railroaded)
WEIGHT	23.70 ounces per linear yard
FINISH	None
BACKING	Acrylic
ABRASION	84,000 double rubs (W)
ORIGIN	United States
FLAME RESISTANCE	California TB 117-2013 Section 1 (Pass)
MAINTENANCE	<p>WS: Clean with upholstery shampoo or mild dry cleaning solvent.</p> <p>Bleach solutions up to 15% for cleaning difficult stains.</p>







SUSTAINABILITY	Third party certified, Indoor Advantage??? Gold.
	Based on disclosure from the supplier this product does not contain harmful chemicals listed on the Red List.
	Free of intentionally added PFAS chemicals.
NOTES	Bleach cleanable. Meets BIFMA HCF 8.1-2019 Health Care Furniture Design Guidelines for Cleanability.
PRICE GRADE	\$45.00 HBF Grade E
ACT REGISTERED CERTIFICATION	    
PRICE LIST	Go to price list
DOWNLOAD	Fabric Product Documents Maintenance Sustainability Statement Sustainability Certification Summary Indoor Advantage??? Certificate Sustainable Contents Performance Textiles Cleaning & Disinfection Against COVID-19
OTHER	Other News & Events Digital Binder Card PFAS - FAQ Presentation / Lookbook Media Kit / Images BIFMA HCF 8.1-2019 Health Care Furniture Design Guidelines for Cleanability