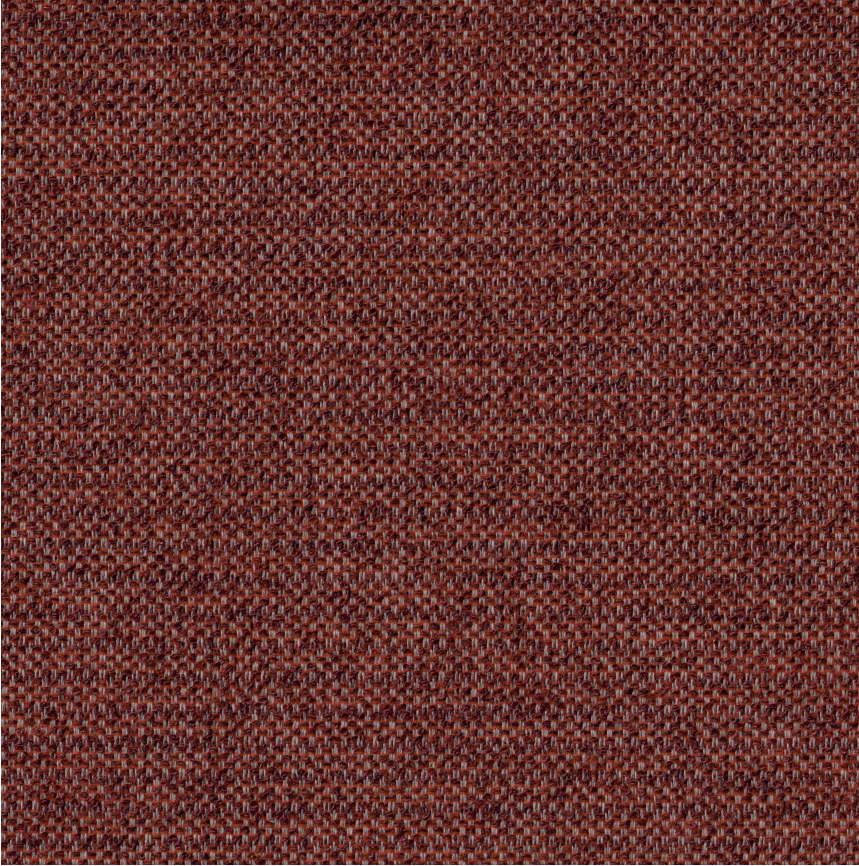


HBF



Ground Cover

1088-75 Cinnabar

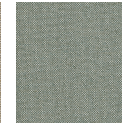
\$59.00/yard



1088-20 -
Flaxen



1088-18 -
Seeded



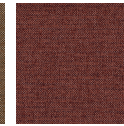
1088-60 - Sea
Glass



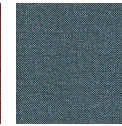
1088-67 -
Conifer



1088-35 -
Walnut



1088-75 -
Cinnabar



1088-59 - Drift



1088-80 - Cloud
Cover



1088-88 -
Shale

| | |
|-------------------------|--|
| DESIGNER | Barbara Barry |
| APPLICATION | Upholstery |
| CONTENT | 100% Sunbrella® acrylic |
| WIDTH | 54" |
| REPEAT | None |
| WEIGHT | 14.95 ounces per linear yard |
| FINISH | Non-PFAS water repellent |
| BACKING | Acrylic |
| ABRASION | 100,000 double rubs (W) |
| ORIGIN | United States |
| FLAME RESISTANCE | California TB 117-2013 Section 1 (Pass) |
| MAINTENANCE | WS: Clean with upholstery shampoo or mild dry-cleaning solvent. Bleach cleanable solutions up to 25% for cleaning difficult stains. |





| | |
|-------------------------------------|---|
| SUSTAINABILITY | <p>Greenscreen™ Bronze certified.</p> <p>Oeko-tex® 100 certified.</p> <p>Greenguard-Gold certified.</p> <p>NSF 336 Silver.</p> <p>Third party certified, Indoor Advantage™ Gold.</p> <p>Meets BIFMA e3 credit 7.4.4 for Targeted Chemical Elimination which includes PFAS restrictions.</p> <p>Based on disclosure from the supplier this product does not contain harmful chemicals listed on the Red List.</p> <p>Free of intentionally added PFAS chemicals.</p> |
| NOTES | <p>Bleach cleanable. Meets BIFMA HCF 8.1-2019 Health Care Furniture Design Guidelines for Cleanability.</p> <p>Approved for outdoor use.</p> |
| PRICE GRADE | \$59.00 HBF Grade G |
| ACT REGISTERED CERTIFICATION | |
| PRICE LIST | Go to price list |
| DOWNLOAD | <p>Fabric Product Documents</p> <p>Maintenance</p> <p>Sustainability Statement</p> <p>Sustainability Certification Summary</p> <p>Indoor Advantage™ Certificate</p> <p>Sustainable Contents</p> <p>Performance Textiles</p> <p>Cleaning & Disinfection Against COVID-19</p> |
| OTHER | <p>Other</p> <p>Digital Binder Card</p> <p>PFAS - FAQ</p> <p>News & Events</p> <p>BIFMA HCF 8.1-2019 Health Care Furniture Design Guidelines for Cleanability</p> |