

HBF



Seeds of Colour

1091-63 Linden

\$67.00/yard



1091-83 - Birch



1091-89 -
Norwood



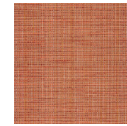
1091-22 -
Ginger



1091-30 - Hazel



1091-25 -
Sunflower



1091-46 -
Primrose



1091-44 -
Dahlia



1091-75 -
Heather



1091-40 -
Jasmine



1091-63 -
Linden



1091-67 - Fern



1091-55 -
Cornflower



1091-59 -
Periwinkle

DESIGNER	Christiane Müller
APPLICATION	Upholstery, wrapped panel
CONTENT	65% post-consumer recycled polyester, 35% polyester
WIDTH	54"
REPEAT	12 1/2" V x 13 1/2" H
WEIGHT	16.26 ounces per linear yard
FINISH	Non-PFAS water repellent
BACKING	Acrylic
ABRASION	100,000 double rubs (W)
ORIGIN	United States
FLAME RESISTANCE	California TB 117-2013 Section 1 (Pass), ASTM-E84 Unadhered, IMO 2010 FTP Code Part 8.2
MAINTENANCE	



WS: Clean with upholstery shampoo or mild dry cleaning solvent.

Bleach cleanable. Bleach solutions up to 25% for cleaning difficult stains.









SUSTAINABILITY

65% post-consumer recycled polyester.

Third party certified, Indoor Advantage™ Gold.

Meets BIFMA e3 credit 7.4.4 for Targeted Chemical Elimination which includes PFAS restrictions.

Based on disclosure from the supplier this product does not contain harmful chemicals listed on the Red List.

Free of intentionally added PFAS chemicals.

NOTES

Bleach cleanable. Meets BIFMA HCF 8.1-2019 Health Care Furniture Design Guidelines for Cleanability.

Approved for outdoor use.

PRICE | GRADE

\$67.00 | HBF Grade J

ACT REGISTERED CERTIFICATION



PRICE LIST

[Go to price list](#)

DOWNLOAD

- [Fabric Product Documents](#)
- [Maintenance](#)
- [Sustainability Statement](#)
- [Sustainability Certification Summary](#)
- [Indoor Advantage™ Certificate](#)
- [Sustainable Contents](#)
- [Performance Textiles](#)
- [Cleaning & Disinfection Against COVID-19](#)

OTHER

- Other**
- [PFAS - FAQ](#)
- [News & Events](#)
- [Video](#)
- [Digital Binder Card](#)
- [BIFMA HCF 8.1-2019 Health Care Furniture Design Guidelines for Cleanability](#)
- [Media Kit / Images](#)
- [Designer Edit with Kickie Chudikova](#)