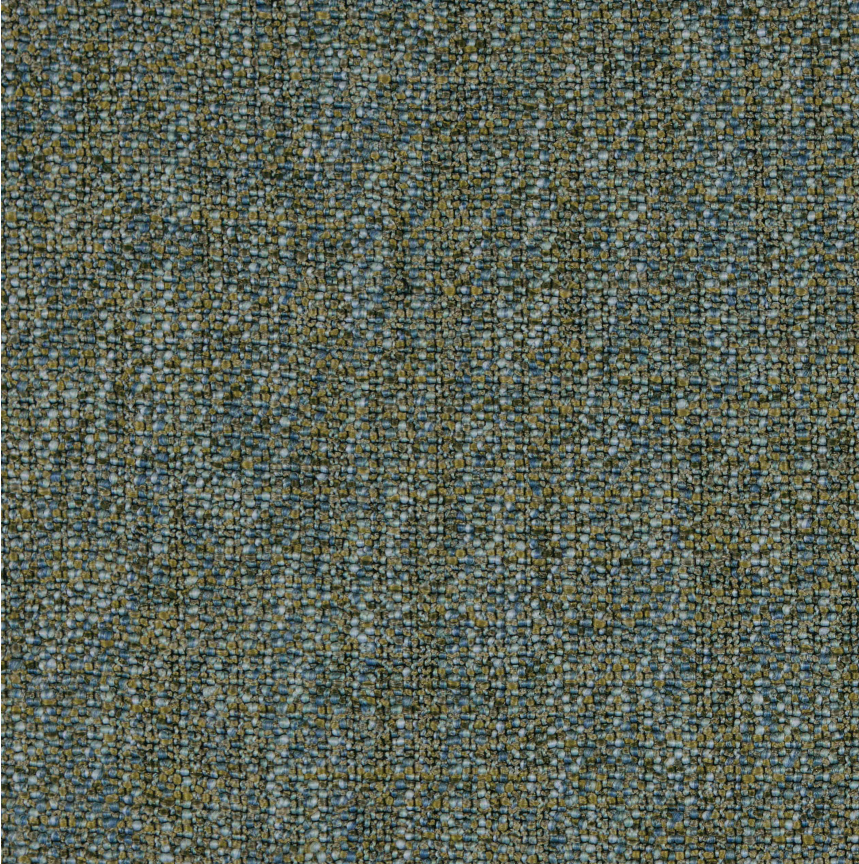


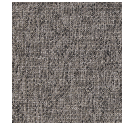
HBF



Trails of Tweed

1090-56 Wetlands

\$92.00/yard



1090-89 -
Bedrock



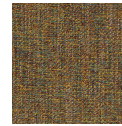
1090-18 - Sand
Dunes



1090-25 -
Sunrise



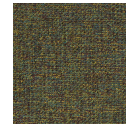
1090-46 -
Painted Canyon



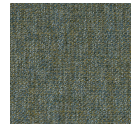
1090-63 -
Meadow



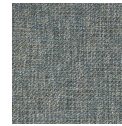
1090-75 -
Vineyard



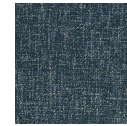
1090-67 -
Woodland



1090-56 -
Wetlands



1090-58 -
Bright Skies



1090-55 -
Coastline

DESIGNER	Christiane Müller
APPLICATION	Upholstery
CONTENT	88% polypropylene, 12% acrylic
WIDTH	55"
REPEAT	None
WEIGHT	36.40 ounces per linear yard
FINISH	None
BACKING	Acrylic
ABRASION	100,000 double rubs (W)
ORIGIN	Italy
FLAME RESISTANCE	California TB-117-2013 Section 1 (Pass)

MAINTENANCE

W: Clean with water based shampoo or foam upholstery cleaner.

Bleach solutions up to 25% for cleaning difficult stains.











SUSTAINABILITY

Third Party Certified, Indoor Advantage™ Gold.

Meets BIFMA e3 credit 7.4.4 for Targeted Chemical Elimination which includes PFAS restrictions.

Based on disclosure from the supplier this product does not contain harmful chemicals listed on the Red List.

Free of intentionally added PFAS chemicals.

NOTES

Bleach cleanable. Meets BIFMA HCF 8.1-2019 Health Care Furniture Design Guidelines for Cleanability.

Approved for outdoor use.

PRICE | GRADE

\$92.00 | HBF Grade L

ACT REGISTERED CERTIFICATION


PRICE LIST

[Go to price list](#)

DOWNLOAD

[Fabric Product Documents](#)
[Maintenance](#)
[Sustainability Statement](#)
[Sustainability Certification Summary](#)
[Indoor Advantage™ Certificate](#)
[Sustainable Contents](#)
[Performance Textiles](#)
[Cleaning & Disinfection Against COVID-19](#)

OTHER

[Other](#)
[PFAS - FAQ](#)
[News & Events](#)
[Video](#)
[Digital Binder Card](#)
[BIFMA HCF 8.1-2019 Health Care Furniture Design Guidelines for Cleanability](#)
[Media Kit / Images](#)
[Designer Edit with Kickie Chudikova](#)