



Cloverleaf

1055-57 Blue/Purple

\$52.00/yard



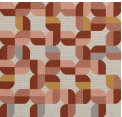
1055-23 - Yellow/Gold



1055-85 - Orange/Navy



1055-67 - Aqua/Green



1055-40 - Pink/Rust



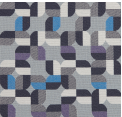
1055-55 - Turquoise/Blue



1055-60 - Pink/Olive



1055-44 - Red/Orange



1055-57 - Blue/Purple

DESIGNER	Mary Jo Miller
APPLICATION	Upholstery, wrapped panel
CONTENT	81% polyester, 19% post-consumer recycled polyester
WIDTH	56"
REPEAT	9 1/2" V x 9 1/2" H
WEIGHT	22.66 ounces per linear yard
FINISH	None
BACKING	Acrylic
ABRASION	100,000 Double Rubs (W)
ORIGIN	United States
FLAME RESISTANCE	California TB 117-2013 Section 1 (Pass), NFPA 260 (UFAC Class 1), ASTM E-84 (unadhered)

MAINTENANCE	<p>WS: Clean with upholstery shampoo or mild dry cleaning solvent.</p> <p>Bleach solutions up to 10% for cleaning difficult stains.</p>
-------------	---



SUSTAINABILITY

19% recycled content.

Third party certified, Indoor Advantage™ Gold.

Meets BIFMA e3 credit 7.4.4 for Targeted Chemical Elimination which includes PFAS restrictions.

Based on disclosure from the supplier this product does not contain harmful chemicals listed on the Red List.

Free of intentionally added PFAS chemicals.

NOTES

Large scale repeat.

Bleach cleanable. Meets BIFMA 8.1 2019 Healthcare Furniture Design Guidelines - Grade 5.

For a coated fabric variant of this pattern, please refer to Pattern 1097, Cloverleaf Print.

PRICE | GRADE

\$52.00 | HBF Grade F

ACT REGISTERED CERTIFICATION



PRICE LIST

[Go to price list](#)

DOWNLOAD

Fabric Product Documents
Maintenance
Sustainability Statement
Sustainability Certification Summary
Indoor Advantage™ Certificate
Sustainable Contents
Performance Textiles
Cleaning & Disinfection
Against COVID-19

OTHER

Other
Media Kit
News & Events
Presentation
Digital Binder Card
PFAS - FAQ
BIFMA HCF 8.1-2019 Health Care Furniture Design Guidelines for Cleanability