



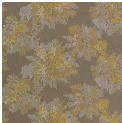
Digital Bloom 2.0

1050-56 Blue Poppy

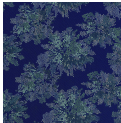
\$70.00/yard



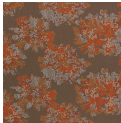
1050-56 - Blue Poppy



1050-22 - Yellow Button



1050-67 - Solomon's Seal



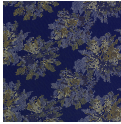
1050-45 - Autumn Joy



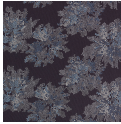
1050-83 - Hydrangea



1050-75 - Dahlia



1050-63 - Forsythia




1050-59 - Cornflower

DESIGNER	Mary Jo Miller
APPLICATION	Upholstery, wrapped panel
CONTENT	100% post-consumer biodegradable* polyester
WIDTH	56"
REPEAT	32 7/8" V x 9 1/2" H (fabric shown railroaded)
WEIGHT	18.90 ounces per linear yard
FINISH	None
BACKING	Biodegradable* acrylic
ABRASION	90,000 double rubs (W)
ORIGIN	United States
FLAME RESISTANCE	California TB 117-2013 Section 1 (Pass), Class A rated ASTM E-84 (unadhered), NFPA 260 (Pass)
MAINTENANCE	

WS: Clean with upholstery shampoo or mild dry cleaning solvent.

Bleach solutions up to 10% for cleaning difficult stains.



SUSTAINABILITY	<p>100% recycled content.</p> <p>Third party certified, Indoor Advantage™ Gold.</p> <p>Meets BIFMA e3 credit 7.4.4 for Targeted Chemical Elimination which includes PFAS restrictions.</p> <p>*CLEAN IMPACT TEXTILES™ Biodegradable - 100% post-consumer recycled biodegradable* polyester Rate and extent of biodegradation into elements found in nature is 91% after 1,278 days under ASTM D5511 (Anaerobic Biodegradation of Plastic Materials Under High Solids Anaerobic Digestion Conditions). The test was done with the same component (PET) polyester and biocatalyst additive. No evidence of further degradation.</p> <p>Based on disclosure from the supplier this product does not contain harmful chemicals listed on the Red List.</p> <p>Free of intentionally added PFAS chemicals.</p>
NOTES	<p>Large scale repeat.</p> <p>Bleach cleanable. Meets BIFMA HCF 8.1-2019 Health Care Furniture Design Guidelines for Cleanability.</p> <p>For a coated fabric variant of this pattern, please refer to Pattern 1096, Digital Bloom 2.0 Print.</p>
PRICE GRADE	\$70.00 HBF Grade J
ACT REGISTERED CERTIFICATION	
PRICE LIST	Go to price list
DOWNLOAD	<p>Fabric Product Documents</p> <p>Maintenance</p> <p>Sustainability Statement</p> <p>Sustainability Certification Summary</p> <p>Indoor Advantage™ Certificate</p> <p>Sustainable Contents</p> <p>Performance Textiles</p> <p>Cleaning & Disinfection</p> <p>Against COVID-19</p> <p>CLEAN IMPACT TEXTILES™</p>
OTHER	<p>Other</p> <p>Media Kit</p> <p>News & Events</p> <p>Presentation</p> <p>Postcard</p> <p>Digital Binder Card</p> <p>PFAS - FAQ</p> <p>BIFMA HCF 8.1-2019 Health Care Furniture Design Guidelines for Cleanability</p>