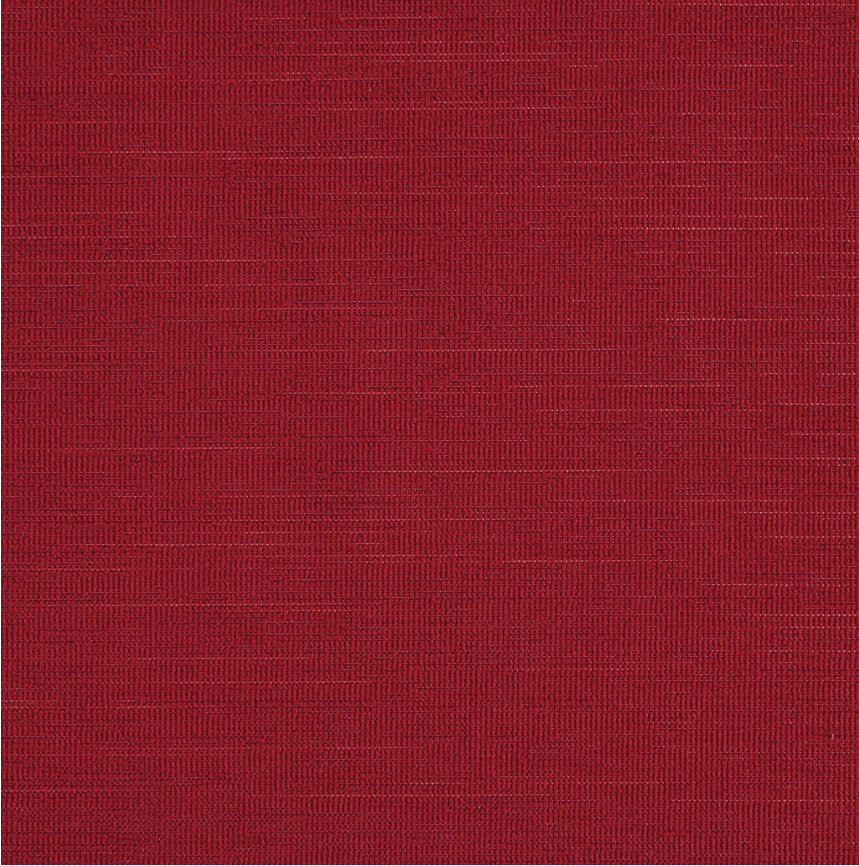


HBF



Look-see

1044-44 Lava

\$35.00/yard



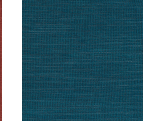
1044-11 -
Snowy



1044-44 - Lava



1044-46 - Terra
Cotta



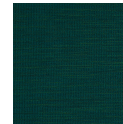
1044-56 -
Wavelet



1044-57 -
Ultramarine



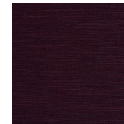
1044-59 -
Midnight



1044-67 -
Foliage



1044-74 -
Wine



1044-75 - Plum



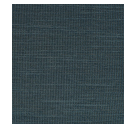
1044-77 -
Electric



1044-80 -
Shady



1044-85 -
Foggy








1044-89 -
Stone

APPLICATION	Upholstery, wrapped panel, systems panel
CONTENT	52% polyester, 31% post-industrial recycled polyester, 17% post-consumer recycled polyester
WIDTH	56"
REPEAT	None
WEIGHT	13.73 ounces per linear yard
FINISH	None
BACKING	Acrylic
ABRASION	100,000 double rubs (W)
ORIGIN	United States
FLAME RESISTANCE	California TB 117-2013 Section 1 (Pass), Class A rated ASTM E-84 (unadhered)
MAINTENANCE	WS: Clean with upholstery shampoo or mild dry cleaning

solvent.

Bleach solutions up to 20% for cleaning difficult stains.

SUSTAINABILITY	48% recycled content. Third party certified, Indoor Advantage™ Gold. Meets BIFMA e3 credit 7.4.4 for Targeted Chemical Elimination which includes PFAS restrictions. Based on disclosure from the supplier this product does not contain harmful chemicals listed on the Red List. Free of intentionally added PFAS chemicals.
NOTES	Bleach cleanable. Meets BIFMA HCF 8.1-2019 Health Care Furniture Design Guidelines for Cleanability.
PRICE GRADE	\$35.00 HBF Grade B
ACT REGISTERED CERTIFICATION	    
PRICE LIST	Go to price list
DOWNLOAD	Fabric Product Documents Maintenance Sustainability Statement Sustainability Certification Summary Indoor Advantage™ Certificate Sustainable Contents Performance Textiles Cleaning & Disinfection Against COVID-19
OTHER	Other Digital Brochure Digital Binder Card PFAS - FAQ BIFMA HCF 8.1-2019 Health Care Furniture Design Guidelines for Cleanability Digital Binder Card