

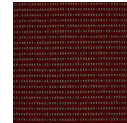
Zippy

1045-89 Dark Grey

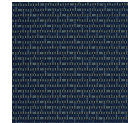
\$19.00/yard



1045-10 - Winter White



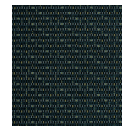
1045-44 - Deep Red



1045-55 - School Blue



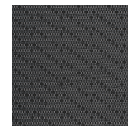
1045-58 - Denim Blue



1045-67 - Pine



1045-80 - Grey



1045-89 - Dark Grey






APPLICATION	Upholstery, wrapped panel, systems panel
CONTENT	79% polyester, 21% post-consumer recycled polyester
WIDTH	57"
REPEAT	5 1/2" V x 2 1/2" H
WEIGHT	13.18 ounces per linear yard
FINISH	None
BACKING	Acrylic
ABRASION	51,000 double rubs (W)
ORIGIN	United States
FLAME RESISTANCE	California TB 117-2013 Section 1 (Pass), Class A rated ASTM E-84 (unadhered)
MAINTENANCE	<p>WS: Clean with upholstery shampoo or mild dry cleaning solvent.</p> <p>Bleach solutions up to 20% for cleaning difficult stains.</p>
SUSTAINABILITY	<p>21% recycled content.</p> <p>Third party certified, Indoor Advantage™ Gold.</p> <p>Meets BIFMA e3 credit 7.4.4 for Targeted Chemical Elimination which includes PFAS restrictions.</p>

Based on disclosure from the supplier this product does not contain harmful chemicals listed on the Red List.

Free of intentionally added PFAS chemicals.

NOTES	Bleach cleanable. Meets BIFMA HCF 8.1-2019 Health Care Furniture Design Guidelines for Cleanability.
--------------	--

PRICE GRADE	\$19.00 HBF Grade A
----------------------	-----------------------

ACT REGISTERED CERTIFICATION	    
-------------------------------------	---

PRICE LIST	Go to price list
-------------------	----------------------------------

DOWNLOAD	Fabric Product Documents Maintenance Sustainability Statement Sustainability Certification Summary Indoor Advantage™ Certificate Sustainable Contents Performance Textiles Cleaning & Disinfection Against COVID-19
-----------------	--

OTHER	Other Digital Brochure Digital Binder Card PFAS - FAQ BIFMA HCF 8.1-2019 Health Care Furniture Design Guidelines for Cleanability
--------------	--