

HBF TEXTILES



Woven Memory

1019-40 Lychee

\$110.00/yard



1019-25 - Honey



1019-40 - Lychee



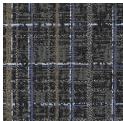
1019-46 - Rosehip



1019-56 - Juniper



1019-63 - Turmeric








1019-90 - Black Truffle

DESIGNER	Christiane Müller
APPLICATION	Upholstery
CONTENT	49% wool, 39% cotton, 9% polyester, 3% nylon
WIDTH	53"
REPEAT	25 1/2" V x 27" H
WEIGHT	34.29 ounces per linear yard
FINISH	None
BACKING	Light acrylic
ABRASION	100,000 double rubs (W)
ORIGIN	United States
FLAME RESISTANCE	California TB 117-2013 Section 1 (Pass)
MAINTENANCE	S: Clean with water free dry cleaning solvent.





SUSTAINABILITY	<div>88% rapidly renewable content.</div> <div>Third party certified, Indoor Advantage™ Gold.</div> <div>Based on disclosure from the supplier this product does not contain harmful chemicals listed on the Red List.</div> <div>Free of intentionally added PFAS chemicals.</div>
NOTES	Large scale repeat.
PRICE GRADE	\$110.00 HBF Grade M
ACT REGISTERED CERTIFICATION	<div></div>
PRICE LIST	Go to price list
DOWNLOAD	<div>Fabric Product Documents</div> <div>Maintenance</div> <div>Sustainability Statement</div> <div>Sustainability Certification Summary</div> <div>Indoor Advantage™ Certificate</div> <div>Sustainable Contents</div>
OTHER	<div>Other</div> <div>Media Kit</div> <div>News & Events</div> <div>PFAS - FAQ</div>