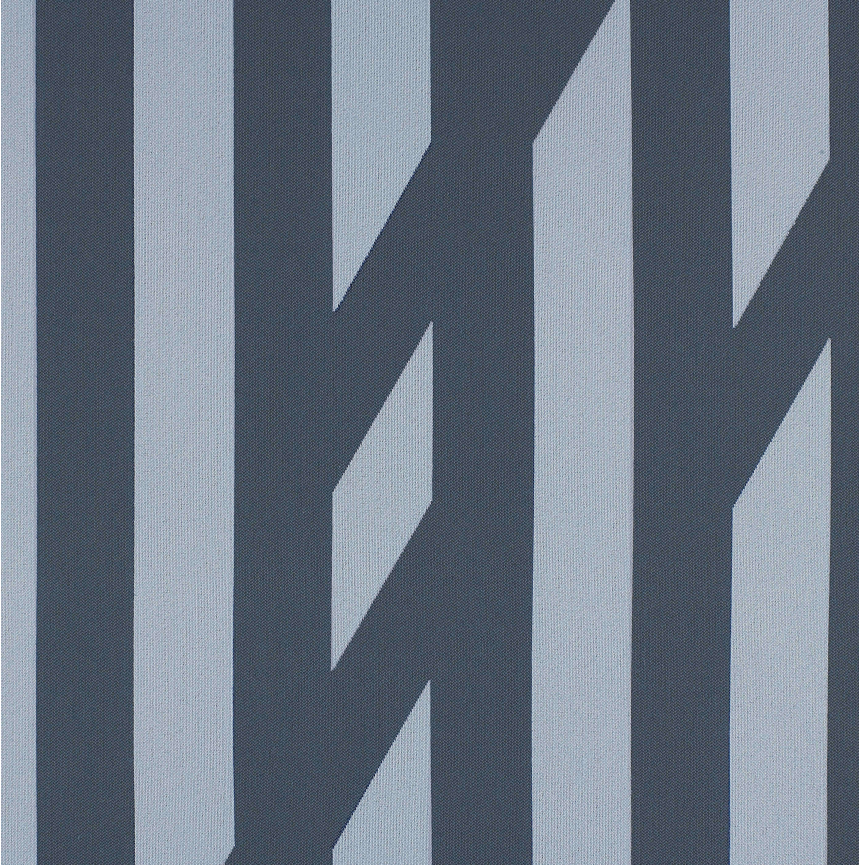


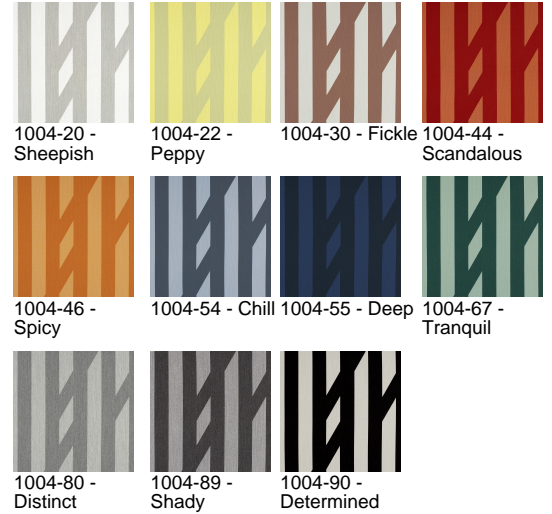
# HBF



## Sir Stripe-a-lot

1004-54 Chill

\$77.00/yard





<b>DESIGNER</b>	Ghislaine Viñas
<b>APPLICATION</b>	Upholstery
<b>CONTENT</b>	67% Sunbrella® acrylic, 33% polyester
<b>WIDTH</b>	54"
<b>REPEAT</b>	28" V x 27 3/4" H (fabric shown railroaded)
<b>WEIGHT</b>	16.59 ounces per linear yard
<b>FINISH</b>	Non-PFAS water repellent
<b>BACKING</b>	None
<b>ABRASION</b>	92,000 double rubs (W)
<b>ORIGIN</b>	United States
<b>FLAME RESISTANCE</b>	California TB 117-2013 Section 1 (Pass)
<b>MAINTENANCE</b>	<p>WS: Clean with upholstery shampoo or mild dry cleaning solvent.</p> <p>Bleach solutions up to 10% for cleaning difficult stains.</p>





---

<b>SUSTAINABILITY</b>	<p>Third party certified, Indoor Advantage™ Gold.</p> <p>Meets BIFMA e3 credit 7.4.4 for Targeted Chemical Elimination which includes PFAS restrictions.</p> <p>Based on disclosure from the supplier this product does not contain harmful chemicals listed on the Red List.</p> <p>Free of intentionally added PFAS chemicals.</p>
<b>NOTES</b>	<p>Approved for outdoor use.</p> <p>Large scale repeat.</p> <p>Bleach cleanable. Meets BIFMA HCF 8.1-2019 Health Care Furniture Design Guidelines for Cleanability.</p>
<b>PRICE   GRADE</b>	<p>\$77.00   HBF Grade J</p>
<b>ACT REGISTERED CERTIFICATION</b>	<p>    </p>
<b>PRICE LIST</b>	<p><a href="#">Go to price list</a></p>
<b>DOWNLOAD</b>	<p><a href="#">Fabric Product Documents</a> <a href="#">Maintenance</a> <a href="#">Sustainability Statement</a> <a href="#">Sustainability Certification Summary</a> <a href="#">Indoor Advantage™ Certificate</a> <a href="#">Sustainable Contents</a> <a href="#">Performance Textiles</a> <a href="#">Cleaning &amp; Disinfection Against COVID-19</a></p>
<b>OTHER</b>	<p><b>Other</b> <a href="#">Media Kit</a> <a href="#">News &amp; Events</a> <a href="#">Video</a> <a href="#">PFAS - FAQ</a> <a href="#">BIFMA HCF 8.1-2019 Health Care Furniture Design Guidelines for Cleanability</a> <a href="#">Digital Binder Card</a></p>