

# HBF



## Quilted Comfort

1020-25 Honey

\$89.00/yard



1020-25 - Honey



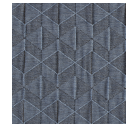
1020-40 - Lychee



1020-46 - Rosehip



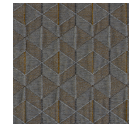
1020-56 - Juniper



1020-58 - Blue Elderberry



1020-63 - Turmeric








1020-89 - Grey Salt

<b>DESIGNER</b>	Christiane Müller
<b>APPLICATION</b>	Upholstery, wrapped panel, systems panel
<b>CONTENT</b>	100% polyester
<b>WIDTH</b>	50"
<b>REPEAT</b>	3 7/8" V x 2 5/8" H
<b>WEIGHT</b>	22.46 ounces per linear yard
<b>FINISH</b>	None
<b>BACKING</b>	None
<b>ABRASION</b>	55,000 double rubs (W)
<b>ORIGIN</b>	Germany
<b>FLAME RESISTANCE</b>	California TB 117-2013 Section 1 (Pass), Class A rated ASTM E-84 (unadhered)
<b>MAINTENANCE</b>	

W: Clean with water based shampoo or foam upholstery cleaner.

Bleach solutions up to 10% for cleaning difficult stains.



<b>SUSTAINABILITY</b>	<p>Third party certified, SCS Indoor Advantage™ Gold.</p> <p>Meets BIFMA e3 credit 7.4.4 for Targeted Chemical Elimination which includes PFAS restrictions.</p> <p>Based on disclosure from the supplier this product does not contain harmful chemicals listed on the Red List.</p> <p>Free of intentionally added PFAS chemicals.</p>
<b>NOTES</b>	<p>Bleach cleanable. Meets BIFMA HCF 8.1-2019 Health Care Furniture Design Guidelines for Cleanability.</p>
<b>PRICE   GRADE</b>	<p>\$89.00   HBF Grade K</p>
<b>ACT REGISTERED CERTIFICATION</b>	<p>    </p>
<b>PRICE LIST</b>	<p><a href="#">Go to price list</a></p>
<b>DOWNLOAD</b>	<p><b>Fabric Product Documents</b></p> <ul style="list-style-type: none"> <li>Maintenance</li> <li>Sustainability Statement</li> <li>Sustainability Certification Summary</li> <li>Indoor Advantage™ Certificate</li> <li>Sustainable Contents</li> <li>Performance Textiles</li> <li>Cleaning &amp; Disinfection Against COVID-19</li> </ul>
<b>OTHER</b>	<p><b>Other</b></p> <ul style="list-style-type: none"> <li>Media Kit</li> <li>News &amp; Events</li> <li>PFAS - FAQ</li> <li>BIFMA HCF 8.1-2019 Health Care Furniture Design Guidelines for Cleanability</li> <li>Digital Binder Card</li> </ul>