

# HBF



## Quilted Comfort

1020-40 Lychee

\$92.00/yard



1020-25 - Honey



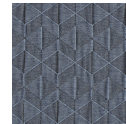
1020-40 - Lychee



1020-46 - Rosehip



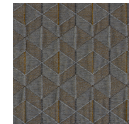
1020-56 - Juniper



1020-58 - Blue Elderberry



1020-63 - Turmeric








1020-89 - Grey Salt

|                         |                                                                              |
|-------------------------|------------------------------------------------------------------------------|
| <b>DESIGNER</b>         | Christiane Müller                                                            |
| <b>APPLICATION</b>      | Upholstery, wrapped panel, systems panel                                     |
| <b>CONTENT</b>          | 100% polyester                                                               |
| <b>WIDTH</b>            | 50"                                                                          |
| <b>REPEAT</b>           | 3 7/8" V x 2 5/8" H                                                          |
| <b>WEIGHT</b>           | 22.46 ounces per linear yard                                                 |
| <b>FINISH</b>           | None                                                                         |
| <b>BACKING</b>          | None                                                                         |
| <b>ABRASION</b>         | 55,000 double rubs (W)                                                       |
| <b>ORIGIN</b>           | Germany                                                                      |
| <b>FLAME RESISTANCE</b> | California TB 117-2013 Section 1 (Pass), Class A rated ASTM E-84 (unadhered) |
| <b>MAINTENANCE</b>      |                                                                              |

W: Clean with water based shampoo or foam upholstery cleaner.

Bleach solutions up to 10% for cleaning difficult stains.



|                                     |                                                                                                                                                                                                                                                                                                                                                                                                                                            |
|-------------------------------------|--------------------------------------------------------------------------------------------------------------------------------------------------------------------------------------------------------------------------------------------------------------------------------------------------------------------------------------------------------------------------------------------------------------------------------------------|
| <b>SUSTAINABILITY</b>               | <p>Third party certified, SCS Indoor Advantage™ Gold.</p> <p>Meets BIFMA e3 credit 7.4.4 for Targeted Chemical Elimination which includes PFAS restrictions.</p> <p>Based on disclosure from the supplier this product does not contain harmful chemicals listed on the Red List.</p> <p>Free of intentionally added PFAS chemicals.</p>                                                                                                   |
| <b>NOTES</b>                        | <p>Bleach cleanable. Meets BIFMA HCF 8.1-2019 Health Care Furniture Design Guidelines for Cleanability.</p>                                                                                                                                                                                                                                                                                                                                |
| <b>PRICE   GRADE</b>                | <p>\$92.00   HBF Grade L</p>                                                                                                                                                                                                                                                                                                                                                                                                               |
| <b>ACT REGISTERED CERTIFICATION</b> | <p>    </p> |
| <b>PRICE LIST</b>                   | <p><a href="#">Go to price list</a></p>                                                                                                                                                                                                                                                                                                                                                                                                    |
| <b>DOWNLOAD</b>                     | <p><b>Fabric Product Documents</b></p> <ul style="list-style-type: none"> <li>Maintenance</li> <li>Sustainability Statement</li> <li>Sustainability Certification Summary</li> <li>Indoor Advantage™ Certificate</li> <li>Sustainable Contents</li> <li>Performance Textiles</li> <li>Cleaning &amp; Disinfection Against COVID-19</li> </ul>                                                                                              |
| <b>OTHER</b>                        | <p><b>Other</b></p> <ul style="list-style-type: none"> <li>Media Kit</li> <li>News &amp; Events</li> <li>PFAS - FAQ</li> <li>BIFMA HCF 8.1-2019 Health Care Furniture Design Guidelines for Cleanability</li> <li>Digital Binder Card</li> </ul>                                                                                                                                                                                           |