

HBF



Quilted Comfort

1020-58 Blue Elderberry

\$89.00/yard



1020-25 - Honey



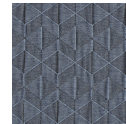
1020-40 - Lychee



1020-46 - Rosehip



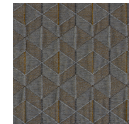
1020-56 - Juniper



1020-58 - Blue Elderberry



1020-63 - Turmeric








1020-89 - Grey Salt

DESIGNER	Christiane Müller
APPLICATION	Upholstery, wrapped panel, systems panel
CONTENT	100% polyester
WIDTH	50"
REPEAT	3 7/8" V x 2 5/8" H
WEIGHT	22.46 ounces per linear yard
FINISH	None
BACKING	None
ABRASION	55,000 double rubs (W)
ORIGIN	Germany
FLAME RESISTANCE	California TB 117-2013 Section 1 (Pass), Class A rated ASTM E-84 (unadhered)
MAINTENANCE	

W: Clean with water based shampoo or foam upholstery cleaner.

Bleach solutions up to 10% for cleaning difficult stains.



SUSTAINABILITY	<p>Third party certified, SCS Indoor Advantage™ Gold.</p> <p>Meets BIFMA e3 credit 7.4.4 for Targeted Chemical Elimination which includes PFAS restrictions.</p> <p>Based on disclosure from the supplier this product does not contain harmful chemicals listed on the Red List.</p> <p>Free of intentionally added PFAS chemicals.</p>
NOTES	<p>Bleach cleanable. Meets BIFMA HCF 8.1-2019 Health Care Furniture Design Guidelines for Cleanability.</p>
PRICE GRADE	<p>\$89.00 HBF Grade K</p>
ACT REGISTERED CERTIFICATION	<p>    </p>
PRICE LIST	<p>Go to price list</p>
DOWNLOAD	<p>Fabric Product Documents Maintenance Sustainability Statement Sustainability Certification Summary Indoor Advantage™ Certificate Sustainable Contents Performance Textiles Cleaning & Disinfection Against COVID-19</p>
OTHER	<p>Other Media Kit News & Events PFAS - FAQ BIFMA HCF 8.1-2019 Health Care Furniture Design Guidelines for Cleanability Digital Binder Card</p>