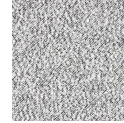


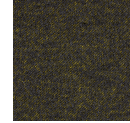
## Poodle

1009-63 Mochi

\$132.00/yard



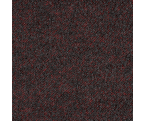
1009-10 -  
Frenchie



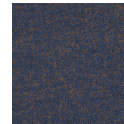
1009-22 - Mini



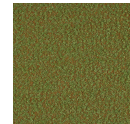
1009-39 - Coco



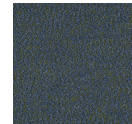
1009-44 -  
Bella



1009-58 - Fifi



1009-63 -  
Mochi



1009-67 -  
Teacup

<b>APPLICATION</b>	Upholstery
<b>CONTENT</b>	77% wool, 14% acrylic, 6% polyester, 3% nylon
<b>WIDTH</b>	52"
<b>REPEAT</b>	None
<b>WEIGHT</b>	22.10 ounces per linear yard
<b>FINISH</b>	None
<b>BACKING</b>	Polyester knit
<b>ABRASION</b>	100,000 cycles (M)
<b>ORIGIN</b>	New Zealand
<b>FLAME RESISTANCE</b>	California TB 117-2013 Section 1 (Pass)
<b>MAINTENANCE</b>	WS: Clean with upholstery shampoo or mild dry cleaning solvent.
<b>SUSTAINABILITY</b>	77% rapidly renewable content.  Third party certified, Indoor Advantage™ Gold.  Based on disclosure from the supplier this product does not contain harmful chemicals listed on the Red List.  Free of intentionally added PFAS chemicals.

**PRICE | GRADE**

\$132.00 | HBF Grade M

---

**ACT REGISTERED  
CERTIFICATION**



**PRICE LIST**

[Go to price list](#)

---

**DOWNLOAD**

**Fabric Product Documents**  
Maintenance  
Sustainability Statement  
Sustainability Certification  
Summary  
Indoor Advantage™ Certificate  
Sustainable Contents

---

**OTHER**

**Other**  
[Media Kit](#)  
[News & Events](#)  
[PFAS - FAQ](#)  
[Digital Binder Card](#)