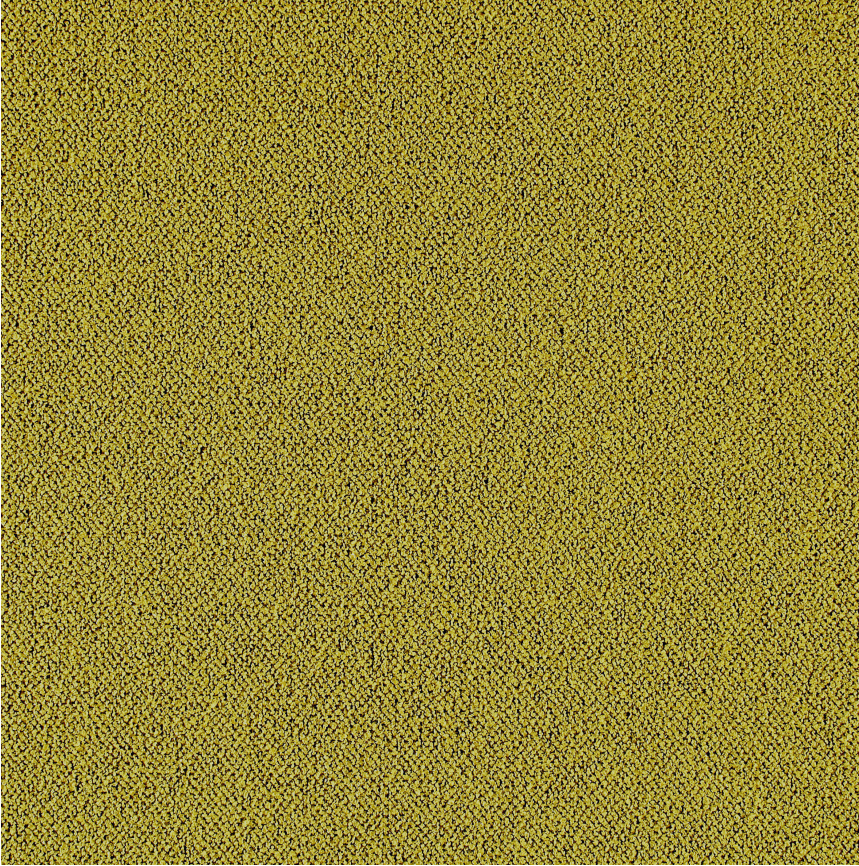


HBF



Merci Boucle

955-63 Chartreuse

\$89.00/yard



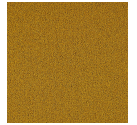
955-10 -
Meringue



955-18 - Gris



955-20 -
Macaroon



955-22 - Dijon



955-37 -
Cathedral



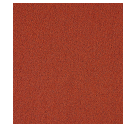
955-40 - Fleur



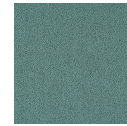
955-43 - Poppy



955-44 -
Rouge



955-46 - Sorbet



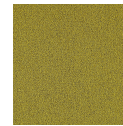
955-56 -
Wintergreen



955-58 - Du
Jour



955-59 -
Indigo



955-63 -
Chartreuse



955-83 -
Sidewalk








955-85 - Ash

APPLICATION	Upholstery, wrapped panel, systems panel
CONTENT	100% polyester face, 50% polyester, 50% acrylic back
WIDTH	54" W
REPEAT	None
WEIGHT	23.2 ounces per linear yard
FINISH	None
BACKING	50% polyester, 50% acrylic
ABRASION	100,000 double rubs (W)
ORIGIN	Germany
FLAME RESISTANCE	Class A rated ASTM E-84 (unadhered), NFPA 260 (UFAC Class 1), California TB 117-2013 Section 1 (Pass), IMO 2010 FTP Code Part 8.2
MAINTENANCE	WS: Clean with upholstery shampoo or mild dry cleaning

solvent.

Bleach solutions up to 10% for cleaning difficult stains.

SUSTAINABILITY	Third party certified, Indoor Advantage™ Gold. Meets BIFMA e3 credit 7.4.4 for Targeted Chemical Elimination which includes PFAS restrictions. Based on disclosure from the supplier this product does not contain harmful chemicals listed on the Red List. Free of intentionally added PFAS chemicals.
NOTES	Bleach cleanable. Meets BIFMA HCF 8.1-2019 Health Care Furniture Design Guidelines for Cleanability.
PRICE GRADE	\$89.00 HBF Grade K
ACT REGISTERED CERTIFICATION	    
PRICE LIST	Go to price list
DOWNLOAD	Fabric Product Documents Maintenance Sustainability Statement Sustainability Certification Summary Indoor Advantage™ Certificate Sustainable Contents Performance Textiles Cleaning & Disinfection Against COVID-19
OTHER	Other Media Kit News & Events PFAS - FAQ BIFMA HCF 8.1-2019 Health Care Furniture Design Guidelines for Cleanability Digital Binder Card
