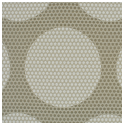


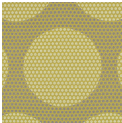
Madam Dottie

1001-54 Chill

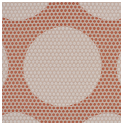
\$68.00/yard



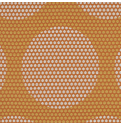
1001-20 - Sheepish



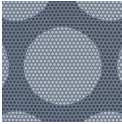
1001-22 - Peppy



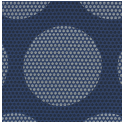
1001-40 - Modest



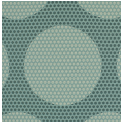
1001-46 - Spicy



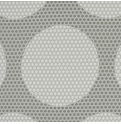
1001-54 - Chill



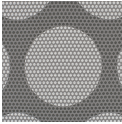
1001-55 - Deep



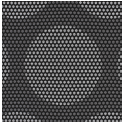
1001-67 - Tranquil



1001-80 - Distinct



1001-89 - Shady

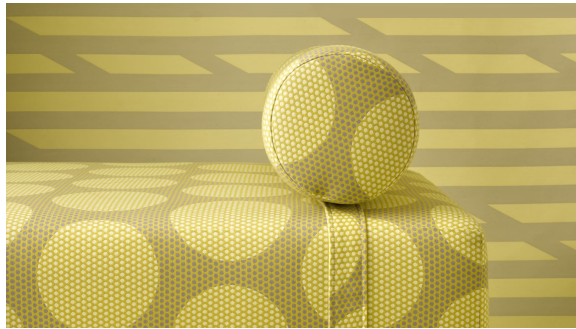


1001-90 - Determined

DESIGNER	Ghislaine Viñas
APPLICATION	Upholstery, wrapped panel, systems panel
CONTENT	83% polyester, 17% nylon
WIDTH	57"
REPEAT	13 3/4" V x 7 1/2" H
WEIGHT	17.54 ounces per linear yard
FINISH	None
BACKING	Acrylic
ABRASION	100,000 double rubs (W)
ORIGIN	United States
FLAME RESISTANCE	California TB 117-2013 Section 1 (Pass), Class A rated ASTM E-84 (unadhered)

MAINTENANCE	WS: Clean with upholstery shampoo or mild dry cleaning solvent. Bleach solutions up to 10% for cleaning difficult stains.
-------------	--





SUSTAINABILITY

Third party certified, Indoor Advantage™ Gold.

Meets BIFMA e3 credit 7.4.4 for Targeted Chemical Elimination which includes PFAS restrictions.

Based on disclosure from the supplier this product does not contain harmful chemicals listed on the Red List.

Free of intentionally added PFAS chemicals.

NOTES

Large scale design.

Bleach cleanable. Meets BIFMA HCF 8.1-2019 Health Care Furniture Design Guidelines for Cleanability.

PRICE | GRADE

\$68.00 | HBF Grade J

**ACT REGISTERED
CERTIFICATION**

PRICE LIST

[Go to price list](#)

DOWNLOAD

Fabric Product Documents
Maintenance
Sustainability Statement
Sustainability Certification
Summary
SCS Indoor Advantage™
Certificate
Sustainable Contents
Performance Textiles
Cleaning & Disinfection
Against COVID-19

OTHER

Other
[Media Kit](#)
[News & Events](#)
[Video](#)
[PFAS - FAQ](#)
[BIFMA HCF 8.1-2019 Health
Care Furniture Design
Guidelines for Cleanability](#)