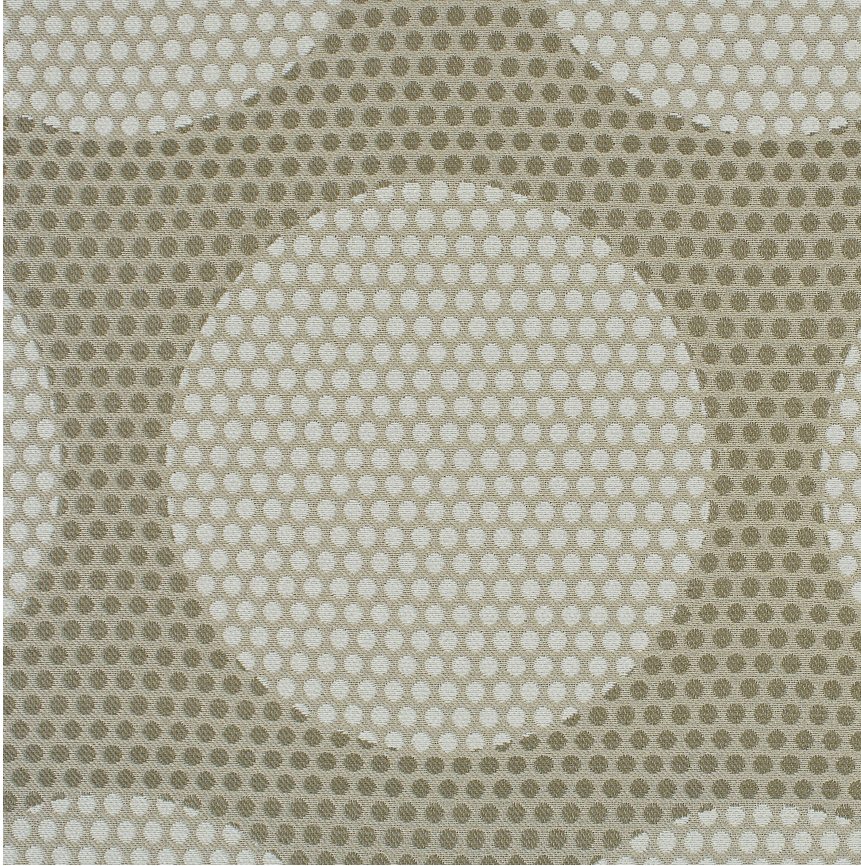


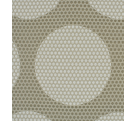
HBF



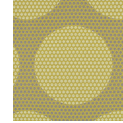
Madam Dottie

1001-20 Sheepish

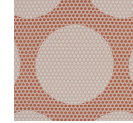
\$69.00/yard



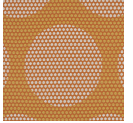
1001-20 -
Sheepish



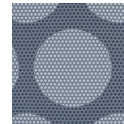
1001-22 -
Peppy



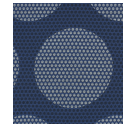
1001-40 -
Modest



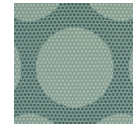
1001-46 -
Spicy



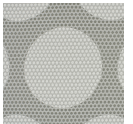
1001-54 - Chill



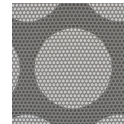
1001-55 - Deep



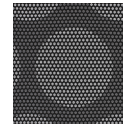
1001-67 -
Tranquil



1001-80 -
Distinct



1001-89 -
Shady



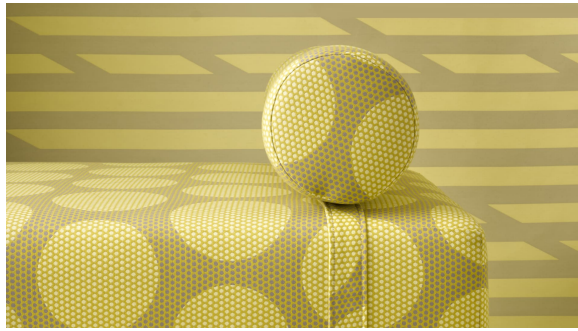
1001-90 -
Determined


DESIGNER	Ghislaine Viñas
APPLICATION	Upholstery, wrapped panel, systems panel
CONTENT	83% polyester, 17% nylon
WIDTH	57"
REPEAT	13 3/4" V x 7 1/2" H
WEIGHT	17.54 ounces per linear yard
FINISH	None
BACKING	Acrylic
ABRASION	100,000 double rubs (W)
ORIGIN	United States
FLAME RESISTANCE	California TB 117-2013 Section 1 (Pass), Class A rated ASTM E-84 (unadhered)
MAINTENANCE	

WS: Clean with upholstery shampoo or mild dry cleaning solvent.

Bleach solutions up to 10% for cleaning difficult stains.





SUSTAINABILITY	Third party certified, Indoor Advantage™ Gold.
	Meets BIFMA e3 credit 7.4.4 for Targeted Chemical Elimination which includes PFAS restrictions.
	Based on disclosure from the supplier this product does not contain harmful chemicals listed on the Red List.
	Free of intentionally added PFAS chemicals.
NOTES	Large scale design.
	Bleach cleanable. Meets BIFMA HCF 8.1-2019 Health Care Furniture Design Guidelines for Cleanability.
PRICE GRADE	\$69.00 HBF Grade J
ACT REGISTERED CERTIFICATION	
PRICE LIST	Go to price list
DOWNLOAD	Fabric Product Documents Maintenance Sustainability Statement Sustainability Certification Summary SCS Indoor Advantage™ Certificate Sustainable Contents Performance Textiles Cleaning & Disinfection Against COVID-19
OTHER	Other Media Kit News & Events Video PFAS - FAQ BIFMA HCF 8.1-2019 Health Care Furniture Design Guidelines for Cleanability Digital Binder Card