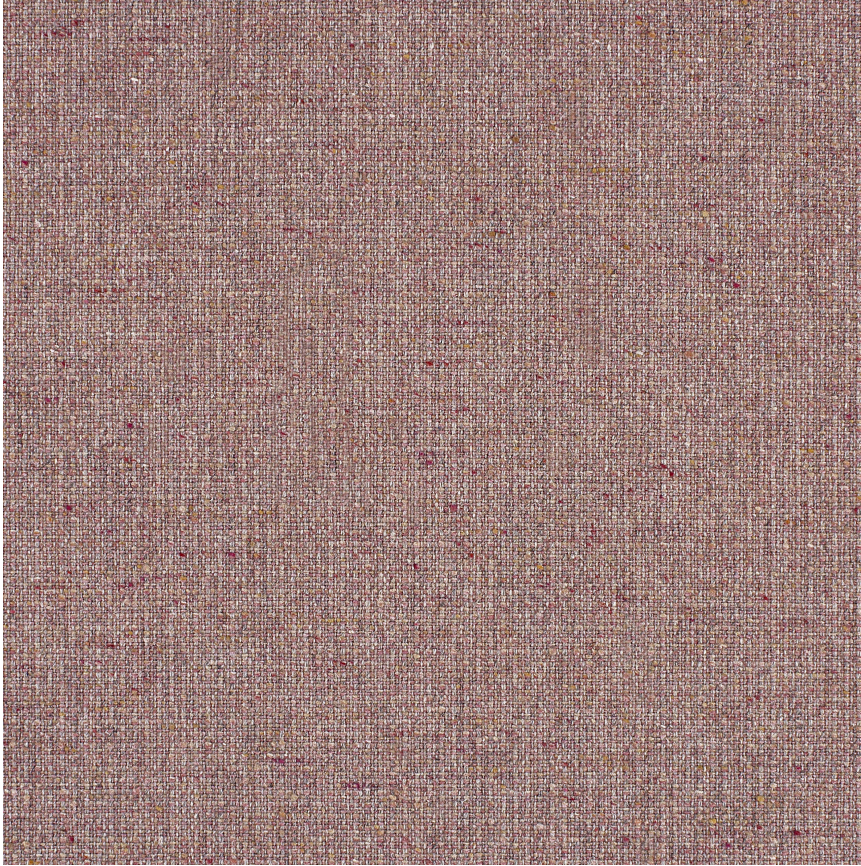


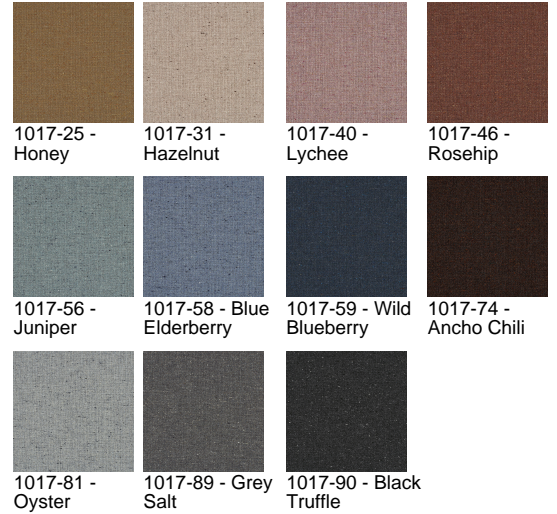
HBF



Crafted Felt

1017-40 Lychee

\$74.00/yard



1017-25 -
Honey

1017-31 -
Hazelnut

1017-40 -
Lychee

1017-46 -
Rosehip

1017-56 -
Juniper

1017-58 - Blue
Elderberry

1017-59 - Wild
Blueberry

1017-74 -
Ancho Chili

1017-81 -
Oyster

1017-89 - Grey
Salt

1017-90 - Black
Truffle

DESIGNER	Christiane Müller
APPLICATION	Upholstery, drapery Cruise/IMO (Upholstery)
CONTENT	67% wool, 28% polyester, 3% nylon, 2% acrylic
WIDTH	55"
REPEAT	None
WEIGHT	14.83 ounces per linear yard
FINISH	None
BACKING	None
ABRASION	100,000 double rubs (W)
ORIGIN	Italy
FLAME RESISTANCE	California TB 117-2013 Section 1 (Pass), NFPA 701 (pass), IMO 2010 FTP Code Part 8.2
MAINTENANCE	S: Clean with water free dry cleaning solvent



SUSTAINABILITY

67% rapidly renewable content.

Third party certified, Indoor Advantage™ Gold.

Based on disclosure from the supplier this product does not contain harmful chemicals listed on the Red List.

Free of intentionally added PFAS chemicals.

PRICE | GRADE

\$74.00 | HBF Grade H

ACT REGISTERED CERTIFICATION



PRICE LIST

[Go to price list](#)

DOWNLOAD

[Fabric Product Documents](#)
[Maintenance](#)
[Sustainability Statement](#)
[Sustainability Certification Summary](#)
[Indoor Advantage™ Certificate](#)
[Sustainable Contents](#)

OTHER

Other
[Media Kit](#)
[News & Events](#)
[Presentation](#)
[PFAS - FAQ](#)
[Digital Binder Card](#)

