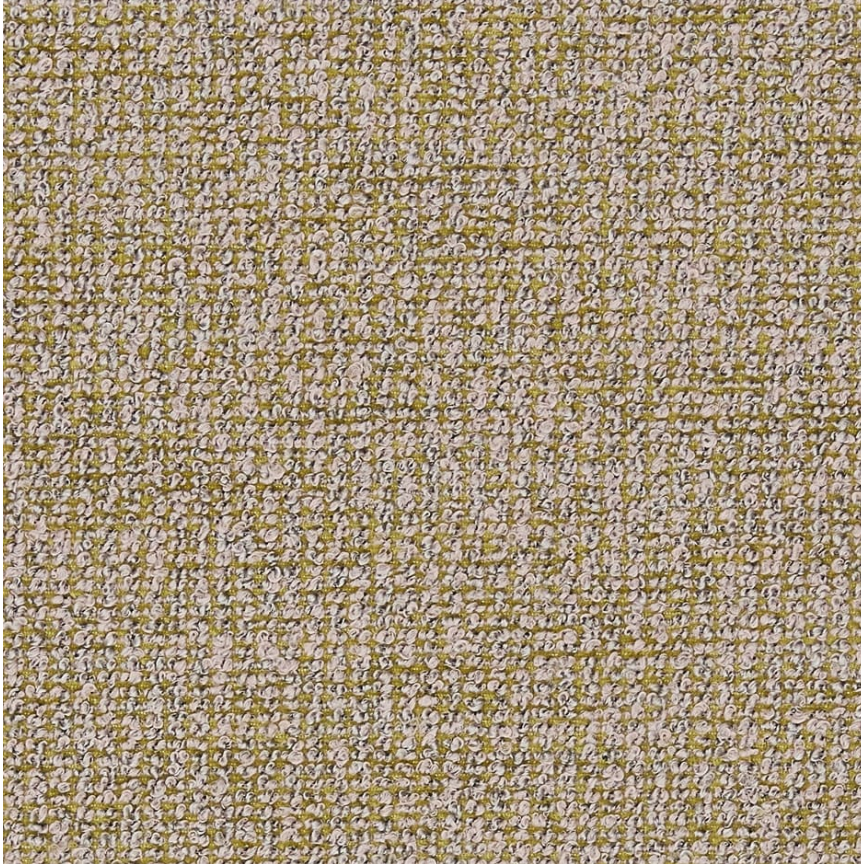


HBF



Pointillist

1115-63 Studmuffin

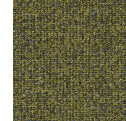
\$82.00/yard



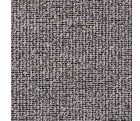
1115-18 - Snow
Queen



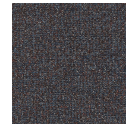
1115-63 -
Studmuffin



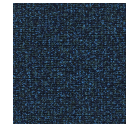
1115-60 -
Dewey Dell



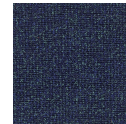
1115-67 -
Butoh



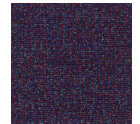
1115-58 - Noh



1115-55 -
Proteus



1115-59 -
Orfeo



1115-44 -
Kabuki



1115-46 - Ceres



1115-36 -
Minotaur

DESIGNER

Liam Lee

DESCRIPTION

Inspired by the fin de siècle movement, uses bouclé yarns to create luminous, cohesive fields of color. Colorways range from vivid hues like Proteus to earthy tones like Noh and playful shades like Studmuffin. Suitable for indoor and outdoor use, it combines visual softness with durability.

APPLICATION

Upholstery

CONTENT

93% polypropylene, 7% acrylic

WIDTH

55" W

REPEAT

None

WEIGHT

26.60 ounces per linear yard

FINISH

None

BACKING

Acrylic

ABRASION

100,000 double rubs (W)

ORIGIN

Italy

FLAME RESISTANCE

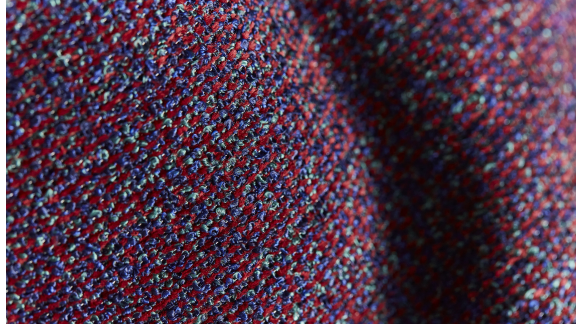
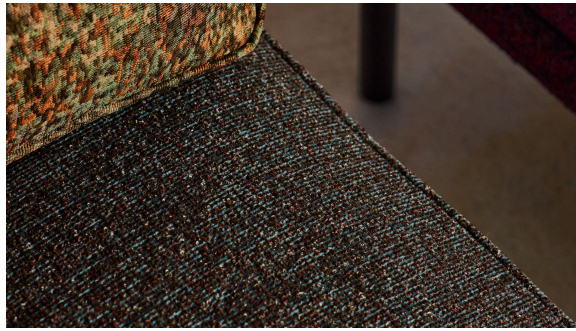
California TB 117-2013
Section 1 (Pass)

MAINTENANCE

W: Clean with water based shampoo or foam upholstery cleaner.

Bleach solutions up to 10% for cleaning difficult stains.





SUSTAINABILITY

Third party certified, Indoor Advantage™ Gold.

Meets BIFMA e3 credit 7.4.4 for Targeted Chemical Elimination which includes PFAS restrictions. Antimicrobial free.

Based on disclosure from the supplier this product does not contain harmful chemicals listed on the Red List.

Free of intentionally added PFAS chemicals.

NOTES

Approved for outdoor use.

PRICE | GRADE

\$82.00 | HBF Grade K

ACT REGISTERED CERTIFICATION

PRICE LIST

[Go to price list](#)

DOWNLOAD

[Fabric Product Documents](#)
[Maintenance](#)
[Sustainability Statement](#)
[Sustainability Certification Summary](#)
[Indoor Advantage™ Certificate](#)
[Sustainable Contents](#)
[Performance Textiles](#)
[Cleaning & Disinfection Against COVID-19](#)

OTHER

[Other](#)
[PFAS - FAQ](#)
[Video](#)
[Digital Binder Card](#)

