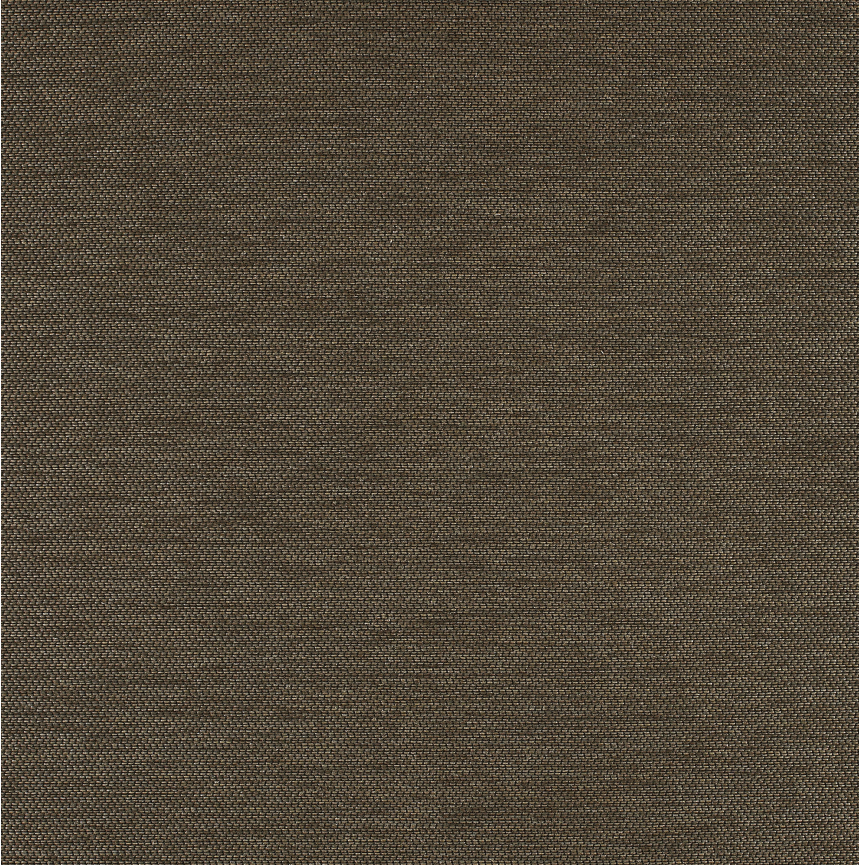


HBF



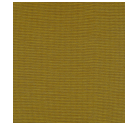
Beetle

945-37 Bark

\$62.00/yard



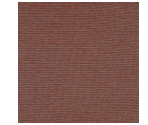
945-18 - Rhino



945-22 -
Tortoise



945-37 - Bark



945-40 -
Ladybug



945-41 - Stag



945-45 - Clown



945-55 -
Longhorn



945-58 - Jewel



945-67 -
Emerald



945-88 - Rice



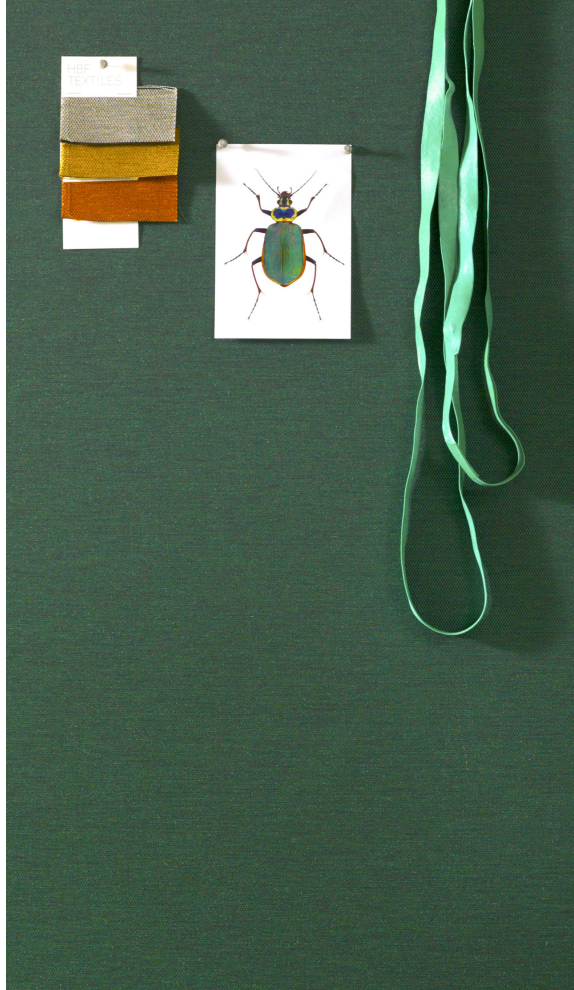
945-89 - Patent

DESIGNER	Elodie Blanchard
APPLICATION	Upholstery, wrapped panel, systems panel
CONTENT	81% polyester, 19% polyacrylic
WIDTH	56"
REPEAT	None
WEIGHT	16.24 ounces per linear yard
FINISH	None
BACKING	None
ABRASION	80,000 double rubs (W)
ORIGIN	Germany
FLAME RESISTANCE	California TB 117-2013 Section 1 (Pass), Class A rated ASTM E-84 (unadhered)

MAINTENANCE

WS: Clean with upholstery shampoo or mild dry cleaning solvent.

Bleach solutions up to 10% for cleaning difficult stains.



SUSTAINABILITY

Third party certified, SCS Indoor Advantage™ Gold.

Meets BIFMA e3 credit 7.4.4 for Targeted Chemical Elimination which includes PFAS restrictions.

Based on disclosure from the supplier this product does not contain harmful chemicals listed on the Red List.

Free of intentionally added PFAS chemicals.

NOTES

Bleach cleanable. Meets BIFMA HCF 8.1-2019 Health Care Furniture Design Guidelines for Cleanability.

PRICE | GRADE

\$62.00 | HBF Grade H

ACT REGISTERED CERTIFICATION


PRICE LIST

[Go to price list](#)

DOWNLOAD

[Fabric Product Documents](#)
[Maintenance](#)
[Sustainability Statement](#)
[Sustainability Certification Summary](#)
[Indoor Advantage™ Certificate](#)
[Sustainable Contents](#)
[Performance Textiles](#)
[Cleaning & Disinfection Against COVID-19](#)

OTHER

Other
[Media Kit](#)
[News & Events Presentation](#)
[PFAS - FAQ](#)
[BIFMA HCF 8.1-2019 Health Care Furniture Design Guidelines for Cleanability.](#)
[Digital Binder Card](#)

