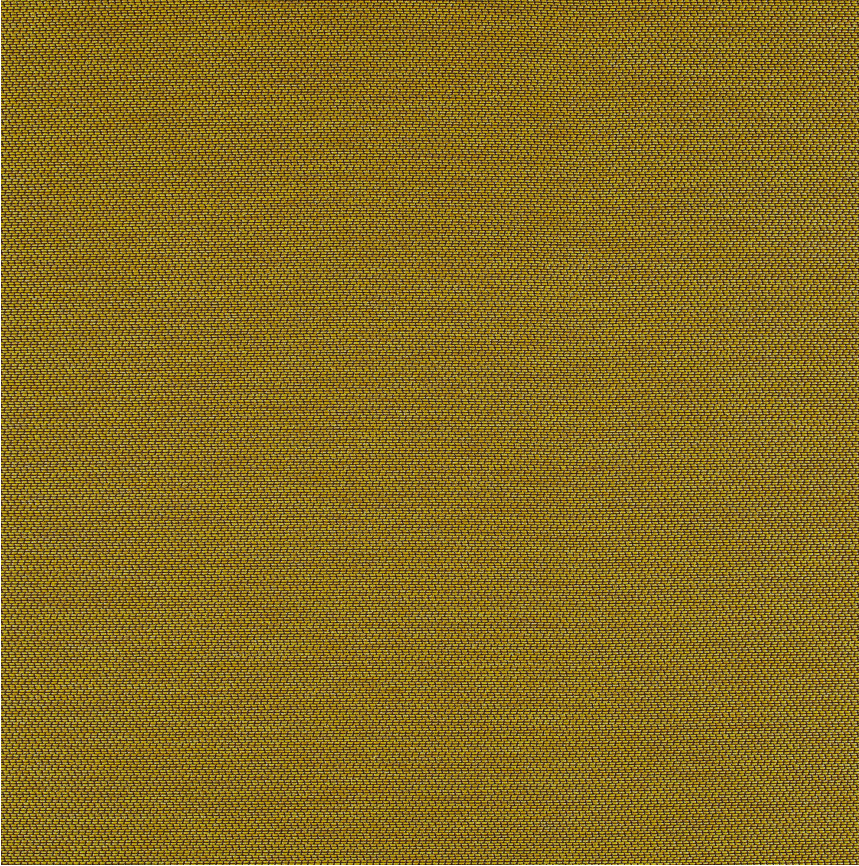


HBF



Beetle

945-22 Tortoise

\$62.00/yard



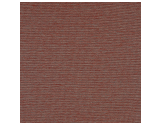
945-18 - Rhino



945-22 -
Tortoise



945-37 - Bark



945-40 -
Ladybug



945-41 - Stag



945-45 - Clown



945-55 -
Longhorn



945-58 - Jewel



945-67 -
Emerald



945-88 - Rice



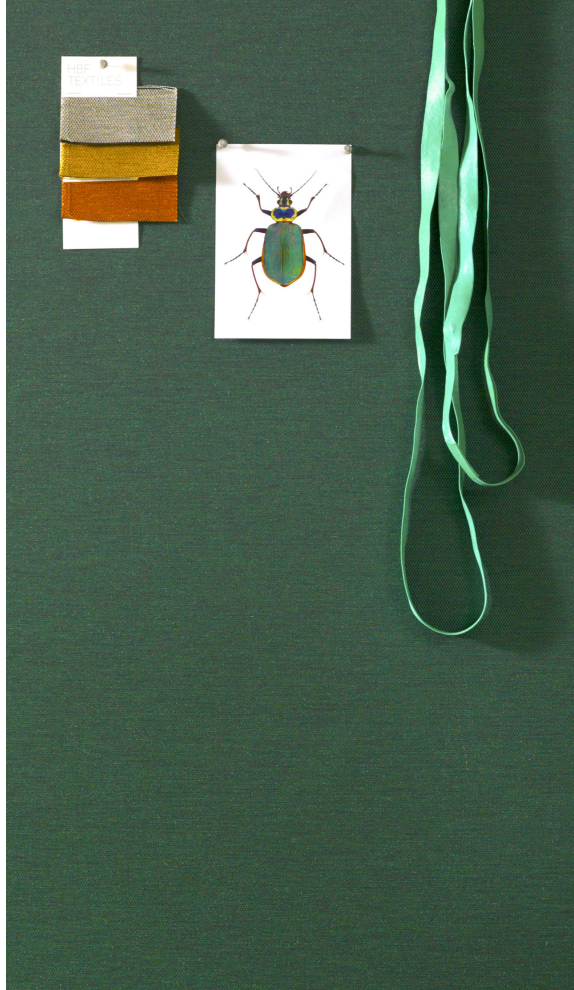
945-89 - Patent

DESIGNER	Elodie Blanchard
APPLICATION	Upholstery, wrapped panel, systems panel
CONTENT	81% polyester, 19% polyacrylic
WIDTH	56"
REPEAT	None
WEIGHT	16.24 ounces per linear yard
FINISH	None
BACKING	None
ABRASION	80,000 double rubs (W)
ORIGIN	Germany
FLAME RESISTANCE	California TB 117-2013 Section 1 (Pass), Class A rated ASTM E-84 (unadhered)

MAINTENANCE

WS: Clean with upholstery shampoo or mild dry cleaning solvent.

Bleach solutions up to 10% for cleaning difficult stains.



SUSTAINABILITY	<p>Third party certified, SCS Indoor Advantage™ Gold.</p> <p>Meets BIFMA e3 credit 7.4.4 for Targeted Chemical Elimination which includes PFAS restrictions.</p> <p>Based on disclosure from the supplier this product does not contain harmful chemicals listed on the Red List.</p> <p>Free of intentionally added PFAS chemicals.</p>
NOTES	Bleach cleanable. Meets BIFMA HCF 8.1-2019 Health Care Furniture Design Guidelines for Cleanability.
PRICE GRADE	\$62.00 HBF Grade H
ACT REGISTERED CERTIFICATION	
PRICE LIST	Go to price list
DOWNLOAD	<p>Fabric Product Documents</p> <ul style="list-style-type: none"> Maintenance Sustainability Statement Sustainability Certification Summary Indoor Advantage™ Certificate Sustainable Contents Performance Textiles Cleaning & Disinfection Against COVID-19
OTHER	<p>Other</p> <ul style="list-style-type: none"> Media Kit News & Events Presentation PFAS - FAQ BIFMA HCF 8.1-2019 Health Care Furniture Design Guidelines for Cleanability. Digital Binder Card

