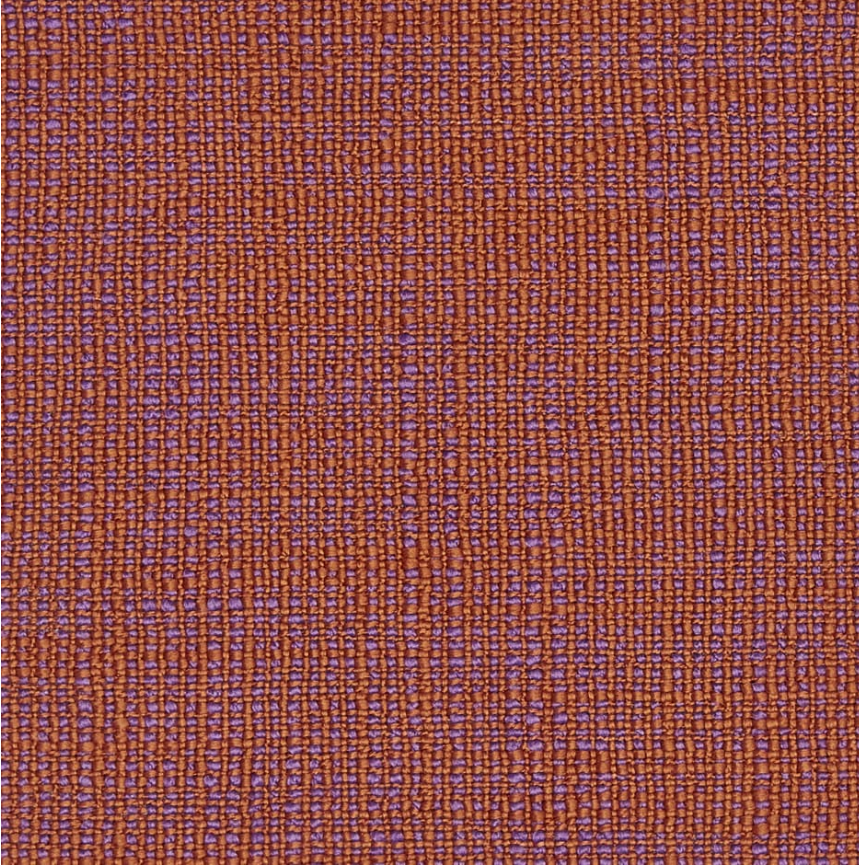


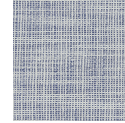
HBF



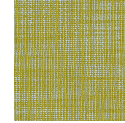
Gridwork

1108-46 Infanta

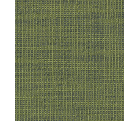
\$75.00/yard



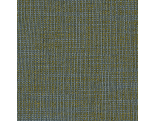
1108-10 -
Phantom



1108-63 -
Sweetpea



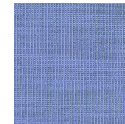
1108-60 -
Papageno



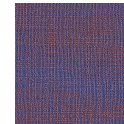
1108-85 -
Kyoto



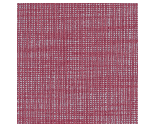
1108-86 -
Galway



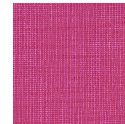
1108-56 -
Mirage



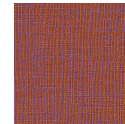
1108-77 -
Bambino



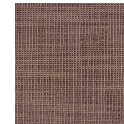
1108-41 -
Dolly



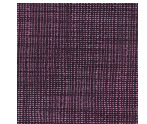
1108-40 -
Tantrum



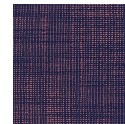
1108-46 -
Infanta



1108-31 -
Cowboy



1108-39 -
Hecate



1108-59 -
Nocturne

DESIGNER

Liam Lee

DESCRIPTION

Gridwork's simple construction conveys a handcrafted feel. Its canvas-like weave is enhanced by textured yarns and contrasting piece-dyed colors, creating a surface that appears soft from a distance but reveals artistic depth up close.

APPLICATION

Upholstery

CONTENT

95% recycled polyester, 5% polyester

WIDTH

55" W

REPEAT

None

WEIGHT

29.30 ounces per linear yard

FINISH

None

BACKING

Acrylic

ABRASION

100,000 double rubs (W)

ORIGIN

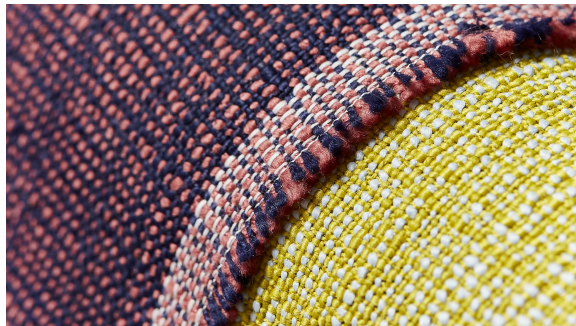
Italy

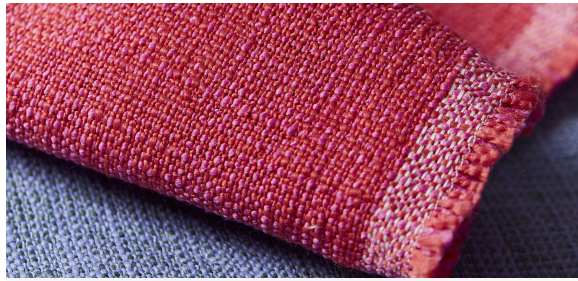
FLAME RESISTANCE






California TB 117-2013
Section 1 (Pass)

MAINTENANCE

S: Clean with water free dry
cleaning solvent.





SUSTAINABILITY	<p>95% post-consumer recycled polyester.</p> <p>Third party certified, Indoor Advantage™ Gold.</p> <p>Meets BIFMA e3 credit 7.4.4 for Targeted Chemical Elimination which includes PFAS restrictions.</p> <p>Based on disclosure from the supplier this product does not contain harmful chemicals listed on the Red List.</p> <p>Free of intentionally added PFAS chemicals.</p>
NOTES	Piece dyed.
PRICE GRADE	\$75.00 HBF Grade K
ACT REGISTERED CERTIFICATION	    
PRICE LIST	Go to price list
DOWNLOAD	<p>Fabric Product Documents</p> <ul style="list-style-type: none"> Maintenance Sustainability Statement Sustainability Certification Summary Indoor Advantage™ Certificate Sustainable Contents
OTHER	<p>Other</p> <ul style="list-style-type: none"> PFAS - FAQ Video Digital Binder Card Presentation with Video