

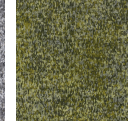
## Magic Eye

1116-77 Sappho

\$63.00/yard



1116-18 -  
Magpie



1116-60 -  
Woodwose



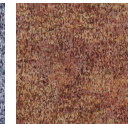
1116-62 -  
Water Lilies



1116-59 -  
Argonaut



1116-55 -  
Hunter



1116-46 - Leaf  
Peeper



1116-77 -  
Sappho

---

### DESIGNER

Liam Lee

---

### DESCRIPTION

Inspired by the computer graphics that fascinated Lee in the '90s, this pattern blends the heritage of Jacquard punch-card weaving with modern digital techniques. Its lichen-like design reflects Lee's interest in how binary code can create organic, richly textured forms.

---

### APPLICATION

Upholstery, wrapped panel

---

### CONTENT

78% post-consumer recycled polyester, 22% nylon

---

### WIDTH

54" W

---

### REPEAT

36.25" V x 27.75" H

---

### WEIGHT

22.98 ounces per linear yard

---

### FINISH

Non-PFAS water repellent

---

### BACKING

Acrylic

---

### ABRASION

100,000 double rubs (W)

---

### ORIGIN

United States

---

### FLAME RESISTANCE

California TB 117-2013  
Section 1 (Pass), ASTM-E84  
Unadhered

---

### MAINTENANCE

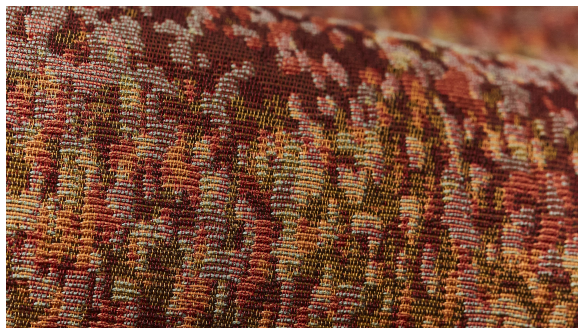
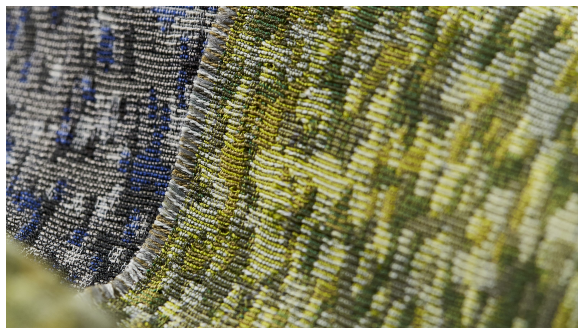
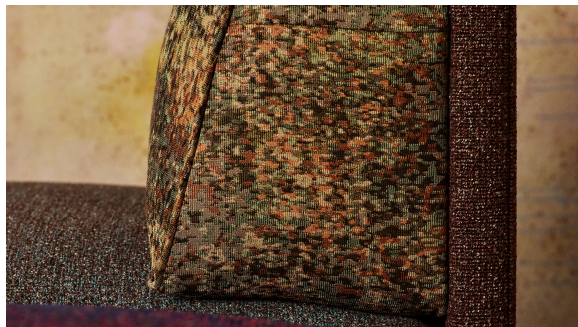
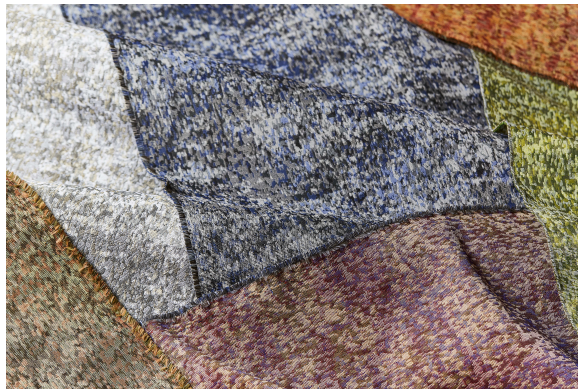
WS: Clean with upholstery  
shampoo or mild dry cleaning  
solvent.

Bleach cleanable. Bleach  
solutions up to 25% for



cleaning difficult stains.







|                                     |   |
|-------------------------------------|---|
| <b>SUSTAINABILITY</b>               | <p>78% post-consumer recycled polyester.</p> <p>Third party certified, Indoor Advantage™ Gold.</p> <p>Meets BIFMA e3 credit 7.4.4 for Targeted Chemical Elimination which includes PFAS restrictions.</p> <p>Based on disclosure from the supplier this product does not contain harmful chemicals listed on the Red List.</p> <p>Free of intentionally added PFAS chemicals.</p> |
| <b>NOTES</b>                        | <p>Bleach cleanable. Meets BIFMA HCF 8.1-2019 Health Care Furniture Design Guidelines for Cleanability.</p> <p>Approved for outdoor use.</p> <p>Random repeat.</p>  |
| <b>PRICE   GRADE</b>                | \$63.00   HBF Grade J   |
| <b>ACT REGISTERED CERTIFICATION</b> |   |
| <b>PRICE LIST</b>                   | <a href="#">Go to price list</a>  |
| <b>DOWNLOAD</b>                     | <p>Fabric Product Documents</p> <p>Maintenance</p> <p>Sustainability Statement</p> <p>Sustainability Certification Summary</p> <p>Indoor Advantage™ Certificate</p> <p>Sustainable Contents</p> <p>Performance Textiles</p> <p>Cleaning &amp; Disinfection</p> <p>Against COVID-19</p>  |
| <b>OTHER</b>                        | <p>Other</p> <p>PFAS - FAQ</p> <p>Video</p> <p>Digital Binder Card</p> <p>BIFMA HCF 8.1-2019 Health Care Furniture Design Guidelines for Cleanability</p>   |