



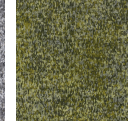
## Magic Eye

1116-46 Leaf Peeper

\$63.00/yard



1116-18 -  
Magpie



1116-60 -  
Woodwose



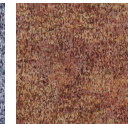
1116-62 -  
Water Lilies



1116-59 -  
Argonaut



1116-55 -  
Hunter



1116-46 - Leaf  
Peeper



1116-77 -  
Sappho

### DESIGNER

Liam Lee

### DESCRIPTION

Inspired by the computer graphics that fascinated Lee in the '90s, this pattern blends the heritage of Jacquard punch-card weaving with modern digital techniques. Its lichen-like design reflects Lee's interest in how binary code can create organic, richly textured forms.

### APPLICATION

Upholstery, wrapped panel

### CONTENT

78% post-consumer recycled polyester, 22% nylon

### WIDTH

54" W

### REPEAT

36.25" V x 27.75" H

### WEIGHT

22.98 ounces per linear yard

### FINISH

Non-PFAS water repellent

### BACKING

Acrylic

### ABRASION

100,000 double rubs (W)

### ORIGIN

United States

### FLAME RESISTANCE

California TB 117-2013 Section 1 (Pass), ASTM-E84 Unadhered

### MAINTENANCE

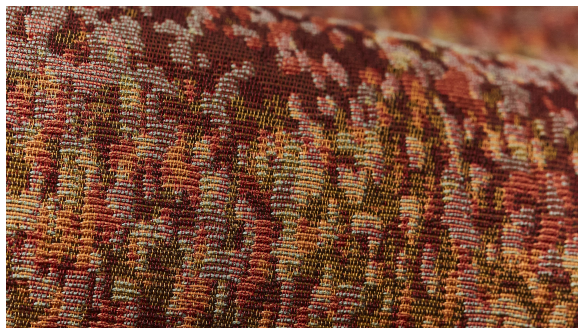
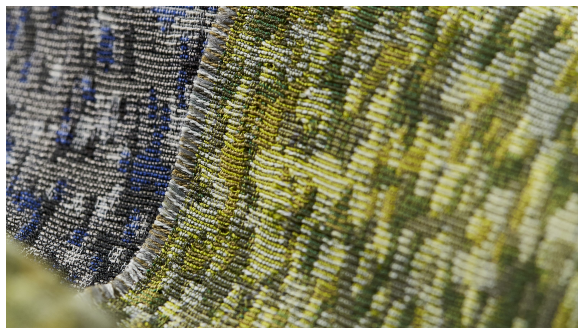
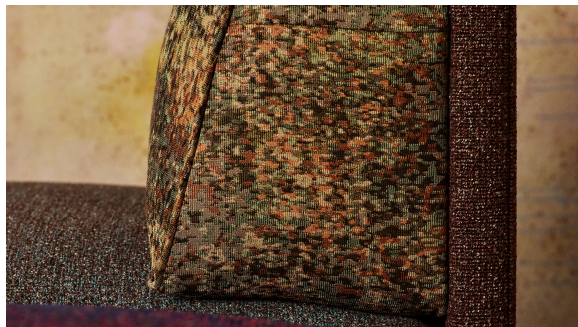
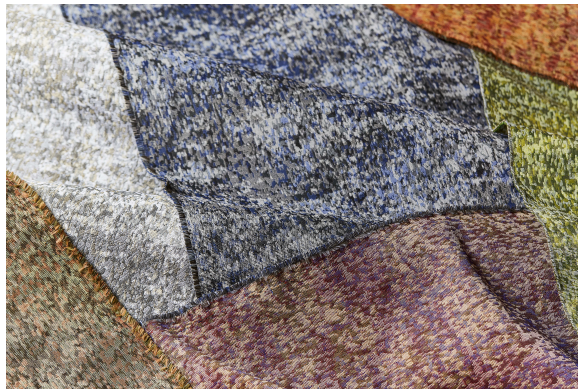
WS: Clean with upholstery shampoo or mild dry cleaning solvent.

Bleach cleanable. Bleach solutions up to 25% for



cleaning difficult stains.







<b>SUSTAINABILITY</b>	<p>78% post-consumer recycled polyester.</p> <p>Third party certified, Indoor Advantage™ Gold.</p> <p>Meets BIFMA e3 credit 7.4.4 for Targeted Chemical Elimination which includes PFAS restrictions.</p> <p>Based on disclosure from the supplier this product does not contain harmful chemicals listed on the Red List.</p> <p>Free of intentionally added PFAS chemicals.</p>
<b>NOTES</b>	<p>Bleach cleanable. Meets BIFMA HCF 8.1-2019 Health Care Furniture Design Guidelines for Cleanability.</p> <p>Approved for outdoor use.</p> <p>Random repeat.</p>
<b>PRICE   GRADE</b>	\$63.00   HBF Grade J
<b>ACT REGISTERED CERTIFICATION</b>	
<b>PRICE LIST</b>	<a href="#">Go to price list</a>
<b>DOWNLOAD</b>	<p>Fabric Product Documents</p> <p>Maintenance</p> <p>Sustainability Statement</p> <p>Sustainability Certification Summary</p> <p>Indoor Advantage™ Certificate</p> <p>Sustainable Contents</p> <p>Performance Textiles</p> <p>Cleaning &amp; Disinfection</p> <p>Against COVID-19</p>
<b>OTHER</b>	<p>Other</p> <p>PFAS - FAQ</p> <p>Video</p> <p>Digital Binder Card</p> <p>BIFMA HCF 8.1-2019 Health Care Furniture Design Guidelines for Cleanability</p>